

# City of Pacific Bulk Trash Pick-up

The City of Pacific will conduct bulk trash pick-up for City residents during the weeks of October 4 and October 11, 2021. There is no charge for this service. The pick-up is for residential properties only (apartment complexes are **not** included) and is for bulk items only. "Bulk" is defined as large items that do not fit in the regular trash containers. **City crews will not pick up regular household trash as part of the bulk trash collection.** (Regular household trash will be picked up by Waste Connections as part of the normal weekly service.)

Bulk items must be set out by 7 a.m. Monday of the week your area is scheduled to be picked up. City crews cannot "back-track" to pick up items that were not set out by the date of the pickup. There is no limit to the number of items residents can set out. However the following items are prohibited and will not be picked up:

**CONSTRUCTION DEBRIS, DEMOLITION DEBRIS, TIRES, BATTERIES, HAZARDOUS MATERIAL, PAINT, BIOMEDICAL & INFECTIOUS WASTE.**

**Please note that appliances WILL be picked up. However, doors must be removed from refrigerators and freezers due to safety concerns. Appliances will be picked up separately from other bulk items.**

The bulk trash pick-up service is provided by the City of Pacific, working in connection with a local contractor and the City's residential waste hauler, Waste Connections. There is no charge to City residents. This bulk pick-up service is **in addition to** the monthly bulk pick-up service available to residents through Waste Connections.

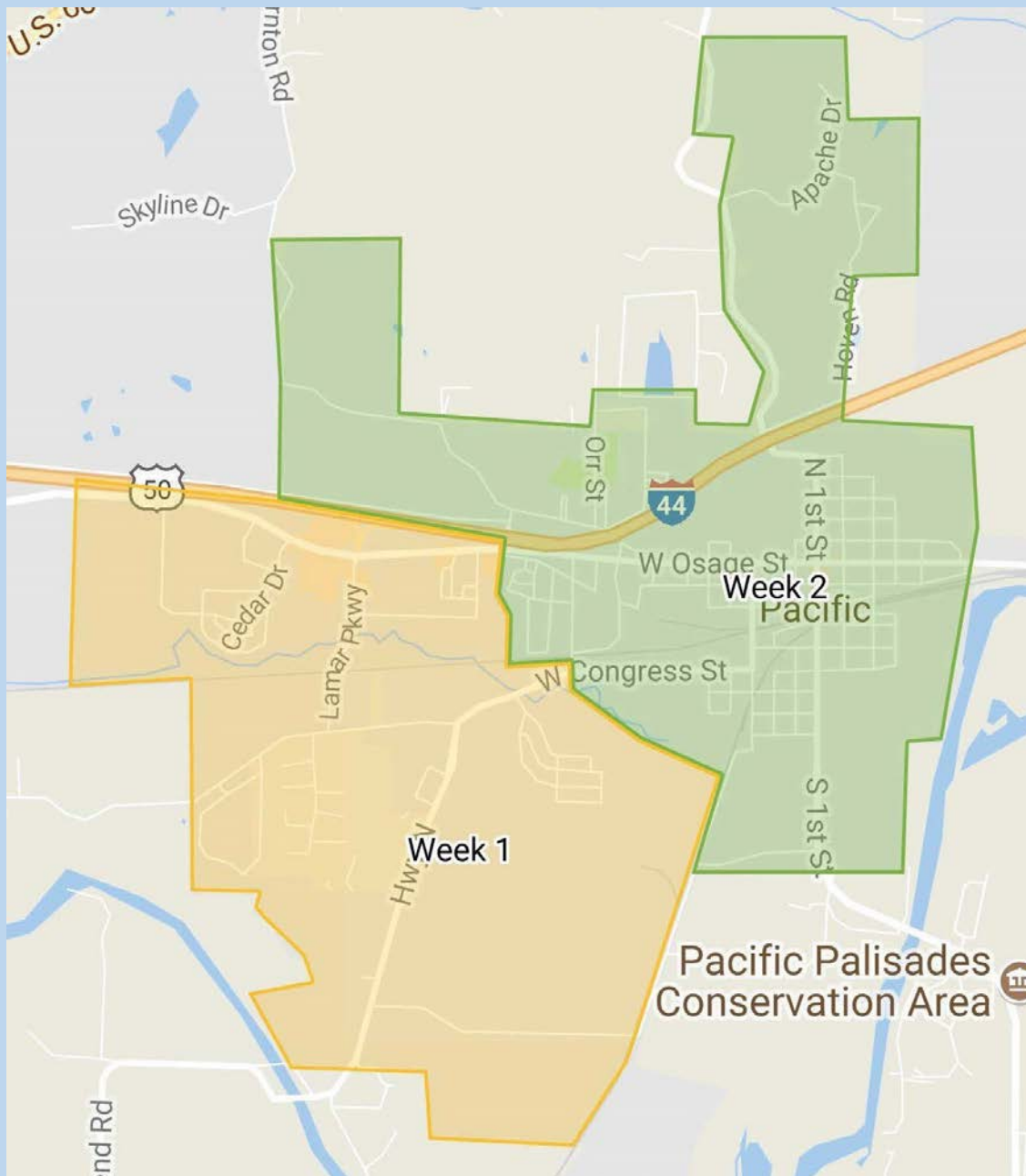
The pick-up schedule is listed below. **Please also note the map on the back side of this flyer.** In general, the west side of the City will be picked up during Week 1, with the north and east sides of the City picked up in Week 2. This flyer and map is also posted on the City website, [www.pacificmissouri.com](http://www.pacificmissouri.com).

Week of October 4-8: All areas west of Viaduct Street and McDonald's; all areas west of Payne Street, including all subdivisions accessed off Congress Street (Highway N) and Old Gray Summit Road: Cedars, Hawthorne, Westlake, Orchard Estates and Candlewick Lane, Heritage Farms, Summit Park, Ridge Meadows, Silver Lake.

Week of October 11-15: All areas north of Interstate 44, including Eagles View, Forest Glen, and Osage Hills subdivisions. All areas east of Viaduct Street and McDonalds, including Hogan Subdivision. All areas east of Payne Street, including Kaleigh Lane, downtown neighborhoods.

*Thank you for your cooperation!*

# City of Pacific Bulk Trash pick-up map



**Week 1 locations: October 4-8 Week 2: October 11-15**

**Please set bulk items out by 7 a.m. Monday of the week scheduled for your residence.**

**Residential properties only will be picked up. No apartment complexes, commercial or industrial areas.**

**Only those areas within the City limits will be picked up!**

**NO CONSTRUCTION DEBRIS, DEMOLITION DEBRIS, TIRES, BATTERIES, HAZARDOUS MATERIAL, PAINT, BIOMEDICAL & INFECTIOUS WASTE!**

**For a more interactive map, please go to [www.pacificmissouri.com](http://www.pacificmissouri.com)**